

Shelley Bridge

YOUR GUIDE TO WASHINGTON PARK

Dear Neighbor, Once again it's good news for Washington Park homeowners! Values continue to rise. If you are wondering how this increase in prices may have affected the value of your property, I would be happy to do a market analysis for you! Of course, I don't charge for this service and will provide it to you for any reason...whether selling, remodeling, for legal or estate reasons, or even if you are just plain curious! **For a full 13 page report with itemized detail of each sale, just call or return the card below.**

Sincerely yours, *Shelley Bridge*

1995 WASHINGTON PARK SOLD HOMES

Sales Price	East Side						West Side								
	University Blvd.			Marion to University			Downing, Corona and Ogden			Emerson to Sherman			Lincoln St.		
	1995	1994	1993	1995	1994	1993	1995	1994	1993	1995	1994	1993	1995	1994	1993
\$0 - 99,999	1	1	3	4	2	10	1	3	4	24	38	71	3	5	11
\$100,000 - 129,999	1	5	7	15	12	27	11	9	21	56	71	62	1	1	2
\$130,000 - 159,999	1	1	1	30	43	61	20	27	15	32	26	12	2	-	-
\$160,000 - 189,999	-	-	3	47	54	37	15	16	10	21	16	5	-	-	-
\$190,000 - 219,999	-	-	-	32	19	10	10	8	5	7	1	1	-	-	-
\$220,000 - \$249,999	-	-	-	17	13	14	4	6	3	5	2	-	-	-	-
\$250,000 - \$279,999	-	-	-	7	8	3	3	1	1	-	-	-	-	-	-
\$280,000 - 309,999	-	1	-	3	7	-	2	2	1	-	-	-	-	-	-
\$310,000 - 339,999	-	-	-	4	4	2	1	-	2	-	-	-	-	-	-
\$340,000 - 369,999	-	-	-	5	5	4	-	-	-	-	-	-	-	-	-
\$370,000 - 399,999	-	-	-	1	2	2	-	-	-	-	-	-	-	-	-
OVER \$400,000	-	-	-	10	5	4	-	-	-	-	-	-	-	-	-
TOTAL SOLD	3	8	14	175	174	174	67	72	62	145	154	151	6	6	13
Avg. Price/Sq. Ft.	\$118	\$103	\$74	\$147	\$135	\$124	\$137	\$125	\$109	\$107	\$99	\$81	\$68	\$66	\$49
High Price/Sq. Ft.	\$130	\$125	\$124	\$201	\$197	\$169	\$179	\$166	\$160	\$160	\$192	\$120	\$95	\$102	\$72
Low Price/Sq. Ft.	\$101	\$84	\$70	\$82	\$82	\$69	\$65	\$54	\$59	\$57	\$49	\$39	\$52	\$42	\$28
Annual % Change	14.6%	+9.4%	+16%	+8.8%	+9.3%	+19%	+9.6%	+14.2%	+13%	+8%	+22.4%	+11%	+3%	+35%	-9%

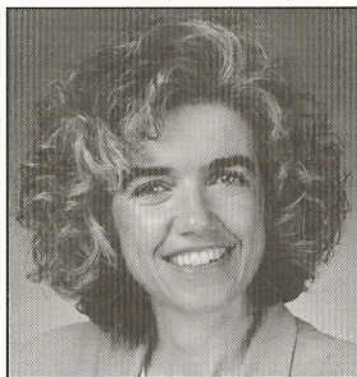
**NOTE: Representations contained herein are based in whole or in part on data supplied by the Metro Denver Board of Realtors or its Multiple Listing Service. Neither the Board nor its MLS guarantees or is in any way responsible for its accuracy. Data maintained by the Board or its MLS may not reflect all real estate activity in the market. Every effort, however, has been made to assure its accuracy.

♻️ Printed on Recycled Paper

↙ Detach here and mail

Detach here and mail ↘

- I would like to know the market value of my home.
- I am interested in a new home.
- I am interested in investment property.
- Please send me a copy of your 13 page detailed report.



Shelley Bridge

RE/MAX of Cherry Creek, Inc.
 3700 E. Alameda Ave - Suite 400 · Denver, CO 80209
(303) 320-1556
 Direct (303) 331-4562
 Toll Free (800) 765-7110

NAME _____

BEST TIME TO CALL _____ : _____ m

PHONE _____

STREET _____

CITY _____

STATE * _____

ZIP _____

(If your home is presently offered for sale, this is not intended as a solicitation of that listing.)